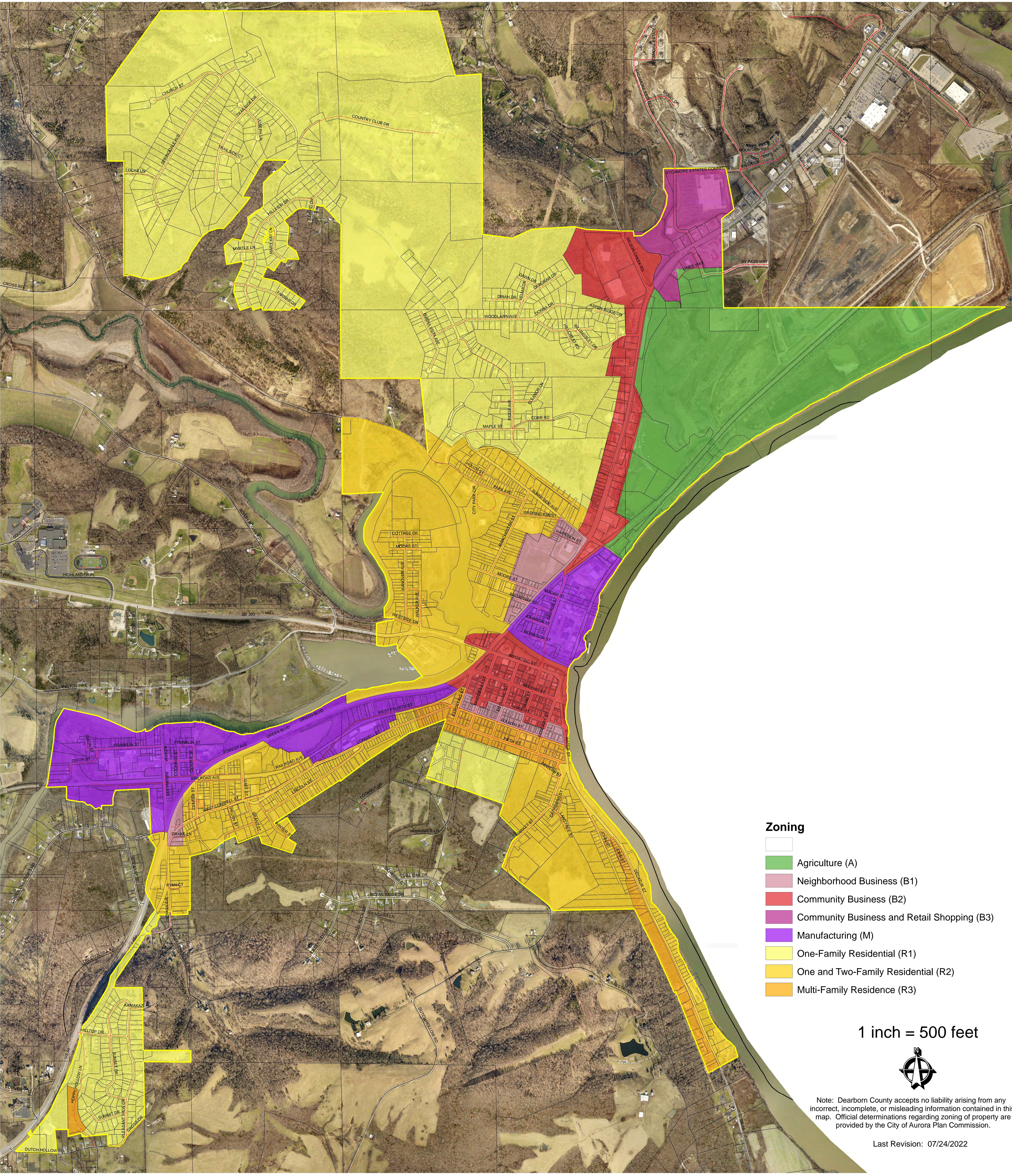


CITY OF AURORA ZONING MAP



- Zoning**
- Agriculture (A)
 - Neighborhood Business (B1)
 - Community Business (B2)
 - Community Business and Retail Shopping (B3)
 - Manufacturing (M)
 - One-Family Residential (R1)
 - One and Two-Family Residential (R2)
 - Multi-Family Residence (R3)

1 inch = 500 feet



Note: Dearborn County accepts no liability arising from any incorrect, incomplete, or misleading information contained in this map. Official determinations regarding zoning of property are provided by the City of Aurora Plan Commission.

Last Revision: 07/24/2022