

# City of Aurora Congratulates



Consolidated Grain & Barge (CGB) was established in St. Louis, Missouri, in 1970, as a barge transportation company. Their primary business is grain origination, transportation, and logistics, but they also offering an array of services for U.S. agriculture, manufacturing industries, transportation industries, as well as the exportation of U.S. produced oilseeds and feed ingredients. Today, CGB has 100+ locations (90 Grain & 12 Inland Bulk Terminals) and 2,500 employees.

For more info contact:  
Mark Caskey, Facility Manager  
210 George St.  
Aurora, IN 47001  
Email: [mark.caskey@cgb.com](mailto:mark.caskey@cgb.com)  
Office: 812.926.0740 or Cell: 513.305.8022  
Web: [www.cgbgrain.com](http://www.cgbgrain.com)  
*\*CGB is owned by ITOCHU Corporation*

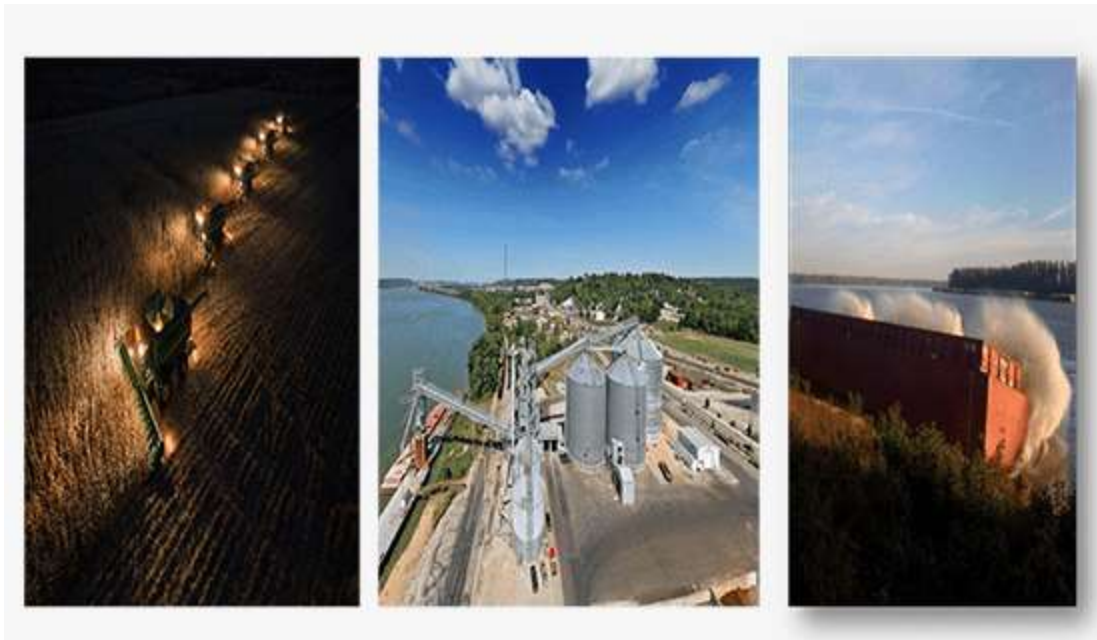


**CTC** ENTERPRISES, INC.

Crop  
 Seed Production  
 Risk Management  
 Financial Services  
 SOYBEAN PROCESSING  
 SOYBEAN PROCESSING  
 CMB FEED INGREDIENTS  
 Fertilizer  
 CGR Diversified Services  
 Marine  
 AGRifinancial Services  
 Terminals and Logistics  
 CTC  
 MARINE SERVICES

**CTLC**  
CONSOLIDATED TERMINALS AND LOGISTICS CO.

"One Seamless Journey"



### Aggregates



- Cement
- Limestone
- Sandstone
- Sand
- Gravel
- Slag

### Minerals



- Salt
- MagOx
- Bauxite
- Alumina
- Magnetite
- Silicon Carbide

### Ag Products



- DAP/MAP
- Sodium Nitrate
- Am. Nitrate
- Urea
- Potash
- TSP
- Grains
- Oil Seeds
- Gypsum

### Steel Inputs



- Pig Iron
- Steel Scrap
- Alloys
- Iron Ore
- DRI
- Coal

### Steel Products



- Slabs
- Coils
- Pipe
- Billets
- Wire rods
- Angled Steel

### Project Cargo



- Power Generation
- Oil & Gas
- Construction