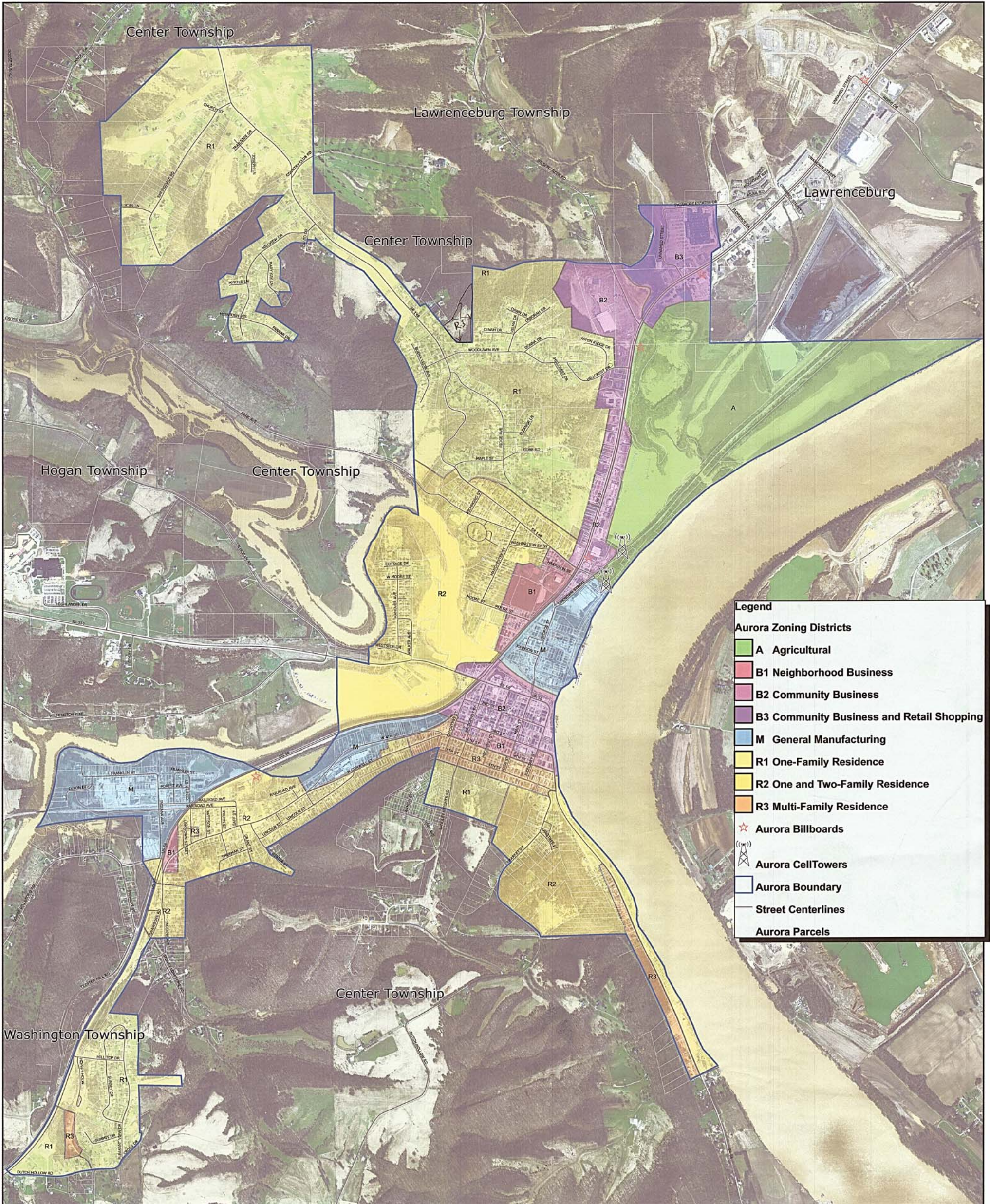




Aurora Zoning Districts

Aurora City Council Meeting, September 18, 2006.



Legend

Aurora Zoning Districts

- A Agricultural
- B1 Neighborhood Business
- B2 Community Business
- B3 Community Business and Retail Shopping
- M General Manufacturing
- R1 One-Family Residence
- R2 One and Two-Family Residence
- R3 Multi-Family Residence

- ☆ Aurora Billboards
- ⚡ Aurora Cell Towers
- Aurora Boundary
- Street Centerlines
- Aurora Parcels

0 500 1,000 2,000 Feet

1 inch equals 750 feet

This map is a graphic representation. The Dearborn County Commissioners accept no liability arising from any incorrect or misleading information contained in this map.

